

How to Separate two Networks ie Phone and Data

There are two ways to separate your computer data network from your phone VoIP network and yet use the same router / firewall / Internet connection:

- 1) Ensure the switches support VLANs and patch things out methodically configuring the switch ports to be on the right VLANs. This works for multiple networks you wish to keep separate ie General Office, Guest network, Accounts, Phones etc. You have to keep track of every socket and the devices that will use it. Then into which switch port it is patched, then you can then allocate the VLAN membership & PVID accordingly.



VLAN Membership

Options VLAN ID 3 Group Operation

Ports 1 2 3 4 5 6 7 8

VLAN Identifier Setting

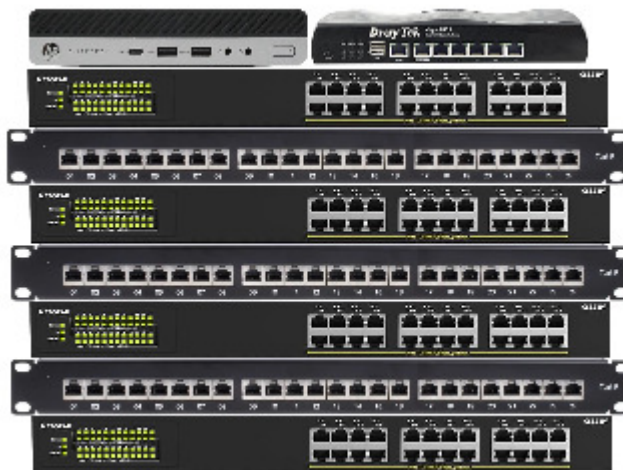
<input type="checkbox"/>	VLAN ID	Port Members
<input type="checkbox"/>	1	1 5
<input type="checkbox"/>	2	12
<input type="checkbox"/>	3	1 6 8
<input type="checkbox"/>	4	1 3
<input type="checkbox"/>	5	1 7
<input type="checkbox"/>	6	1 4

PVID Configuration

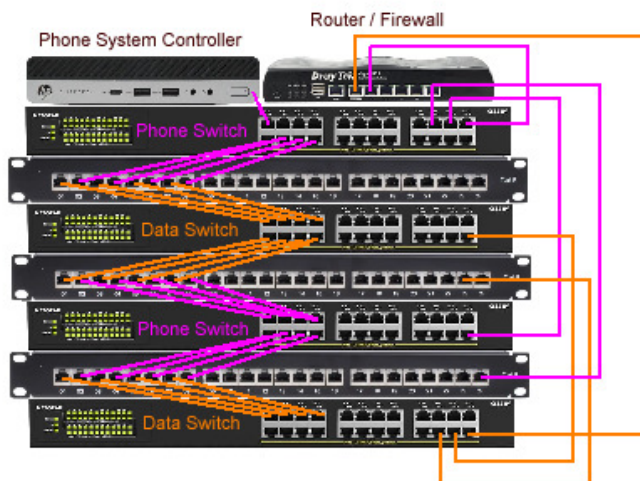
<input type="checkbox"/>	Port	PVID
<input type="checkbox"/>	1	1
<input type="checkbox"/>	2	2
<input type="checkbox"/>	3	4
<input type="checkbox"/>	4	6
<input type="checkbox"/>	5	1
<input type="checkbox"/>	6	3
<input type="checkbox"/>	7	5
<input type="checkbox"/>	8	3

- 2) If you just have two networks then you can use two sets of switches and patch each set to a different port on the router / firewall

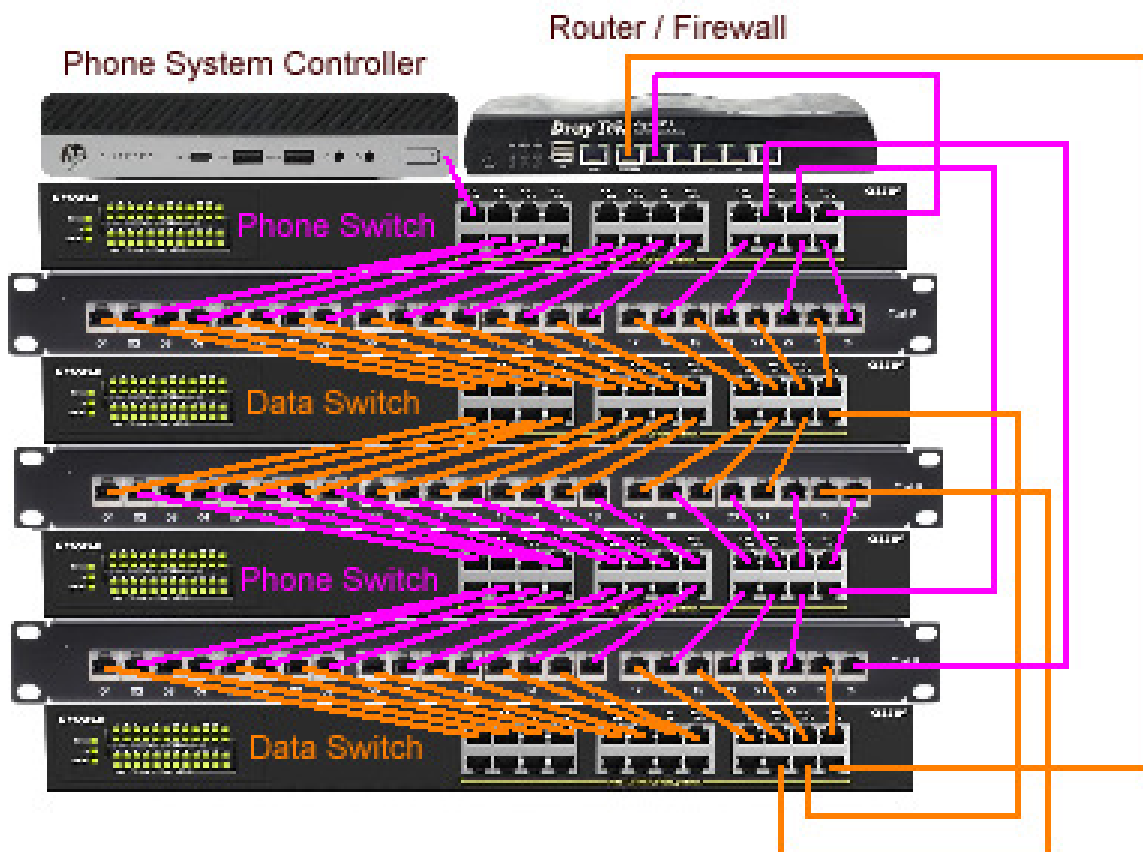
First set your cabinet to switch – patch panel – switch - etc, and put your router / firewall and phone system controller at the top



Every **odd** port is for PC/printer/data and **even** ports are for phones, then every other switch in the stack is for phones then data. You lose some ports for up links, so some alternative patching is needed.



Eventually it ends up looking like this:



With this setup the comms cabinet shouldn't need repatching and any person can just plug a PC or printer into an **odd** numbered socket or a phone into an **even** numbered socket and it will just work without the need to call in technical people to trace wires through each time new IT kit is added.

If you have any questions contact:

CTi Communications Ltd

www.cticom.ms

support@cticom.ms

01242 621666