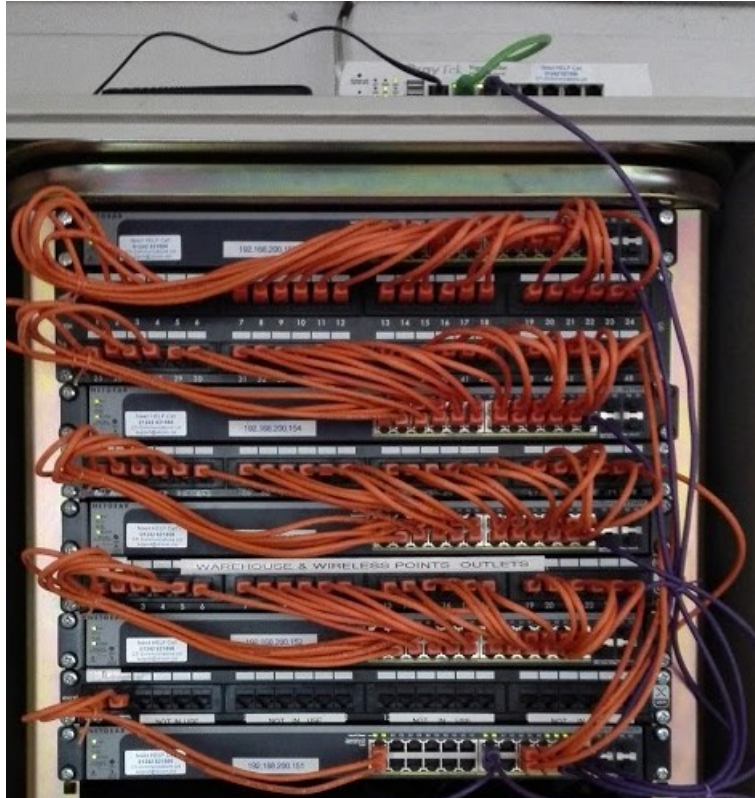


All Ports Active – 100% Patched Out

In the past you only patched the ports that needed data and those that needed voice, leaving a high percentage dead for both. Today with the relative low price of Gigabyte switches and phones being VoIP it makes support easy to initially patch out all ports to a PoE switch them what ever you connect will work – PC, Phone, Printer, IP camera, IP door entry or Wi-Fi access point. The best bit is no more spaghetti as you never need to repatch anything.

Your cabinet should look like this:



The Wi-Fi router is on top.

Each row alternates Patch Panel / Switch

Patch panel ports 1-5 are linked to 1–5 via a 0.5m patch lead 6-23 are linked 6-23 via a 0.2m patch lead.

Switch port 24 (unless you are using the fibre links goes to the router) and the patch panel 24 goes to the last port in the last switch last port..

The second pair of rows etc are:

Patch panel ports 25-29 are linked to 1–5 via a 0.5m patch lead 30-47 are linked 6-23 via a 0.2m patch lead.

Switch port 24 (unless you are using the fibre links goes to the router) and the patch panel 48 goes to the last port in the second to last switch port.

To help with identification, Orange leads are used for all but the link to the router, which are purple.